

The Barge Industry: Are We At Major Inflection Point?

Sandor Toth

President
Criton Corporation



MVTTC
World Trade & Transport
Conference
February 28, 2018

Criton Corp: What We Do



RIVER TRANSPORT NEWS

- Data Provider
- Commissioned Consulting Work
 - Market Analysis
 - Financial Due Diligence
 - Forecasting
- Policy Analysis



Prospects for the Dry Cargo Inland Barge Market through 2022

Photo by Dan O'Leary

Prepared by

Criton Corporation

212 Farmgate Lane

Silver Spring, MD 20905

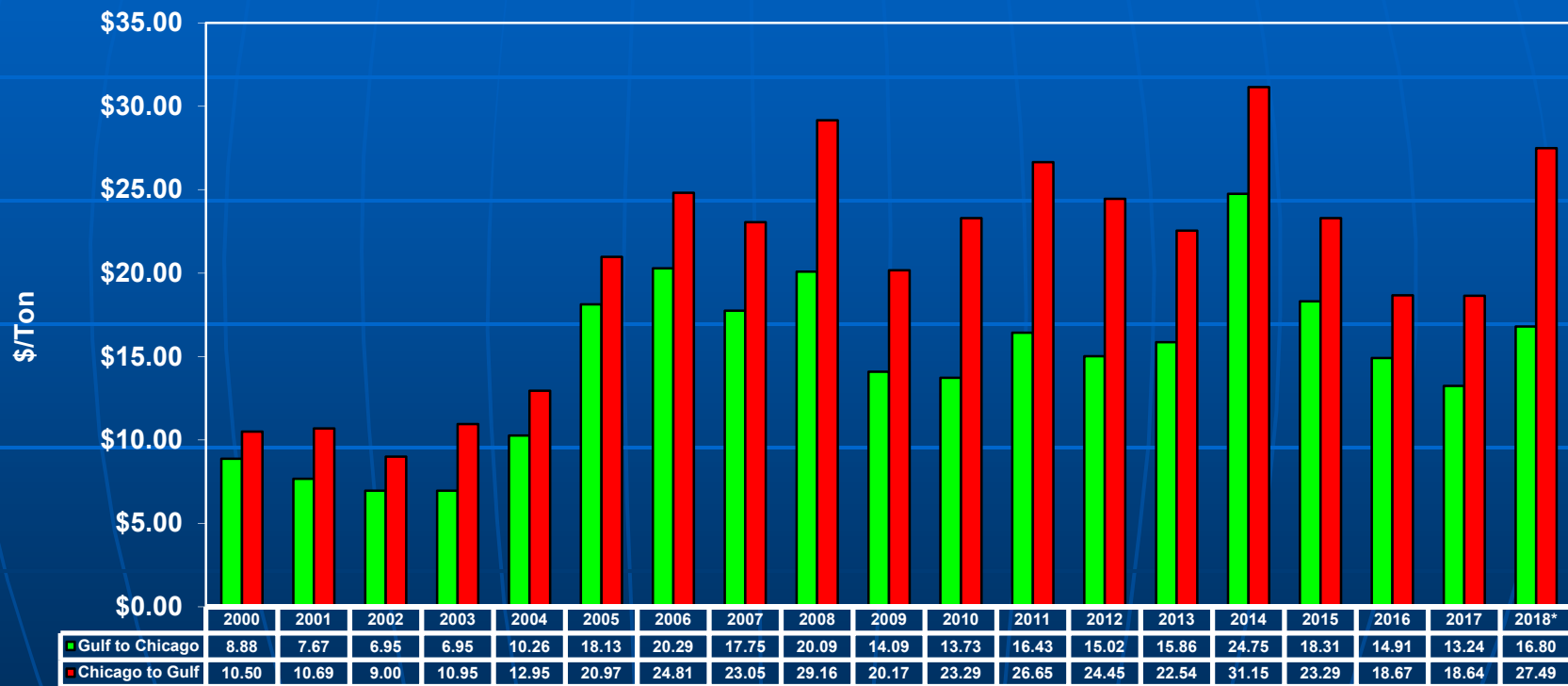
(301) 879-0447

Dry: What's Moving by Barge?

(Millions of Short Tons - 2017)

Commodity	Total	Export	Import	Trade Share (%)
Coal	107.4	6.8	**	6.3
Petroleum Coke	15.2	10.3	**	67.8
Farm Products				
Corn	32.7	31.2	**	95.4
Soybeans	34.8	33.3	**	95.7
Wheat	4.7	4.3	**	91.5
Other Grains	2.4	2.2	**	91.7
Feed/Meal	12.3	11.6	**	94.3
Subtotal	86.9	82.6	**	95.1
Fertilizer	17.8	**	8.7	48.9
Finished Steel	6.8	**	2.0	29.4
Semi-Finished Steel	3.8	**	3.5	92.1
Pig/DRI/Scrap	12.4	**	6.1	49.2
Ferroalloys	1.3	**	1.2	92.3
Iron Ore	0.7	0.1	0.6	100.0
Alum. Ore	1.6	**	1.6	100.0
Limestone	25.2	**	**	**
Sand/Gravel	33.9	**	**	**
Cement	8.4	**	0.2	2.4
Salt	6.3	**	0.3	4.8
Gypsum	2.3	**	**	**
Total	345.8	99.7	24.2	35.8

Annual Average Dry Spot Rates



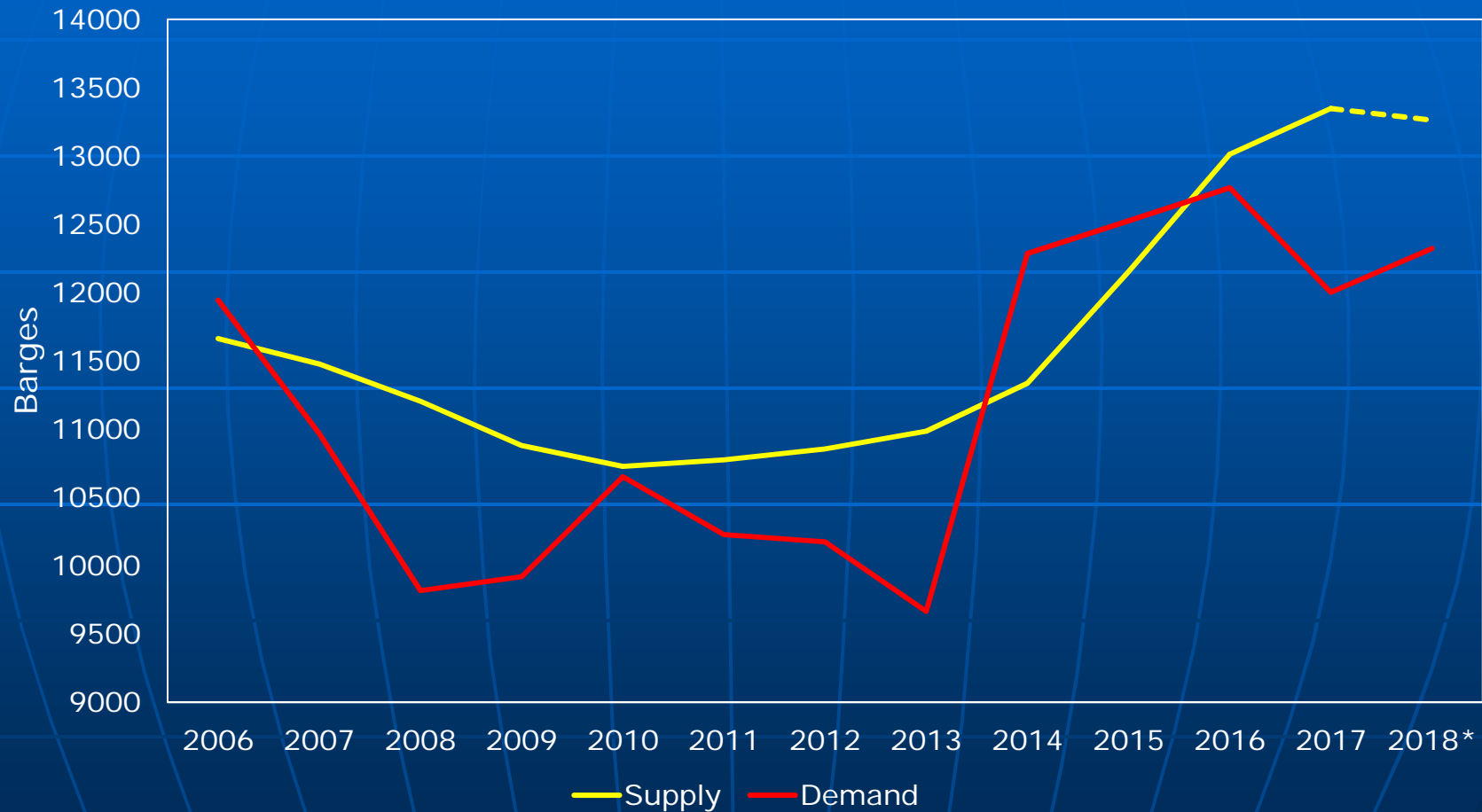
Barge Industry Inflection Point 2004-2006

- Permanent Shift in Pricing
- Steel Industry Recovery
 - High Scrap Prices
 - Surging Raw Material Imports
 - High Finished Steel Prices
 - Dramatic Increase in New Barge Pricing
- Permanent Increase in Labor Costs
 - Effects both Towing and Harbor Services
 - Strong Economic Growth
 - Hurricane Katrina

2018 Dry Market Developments

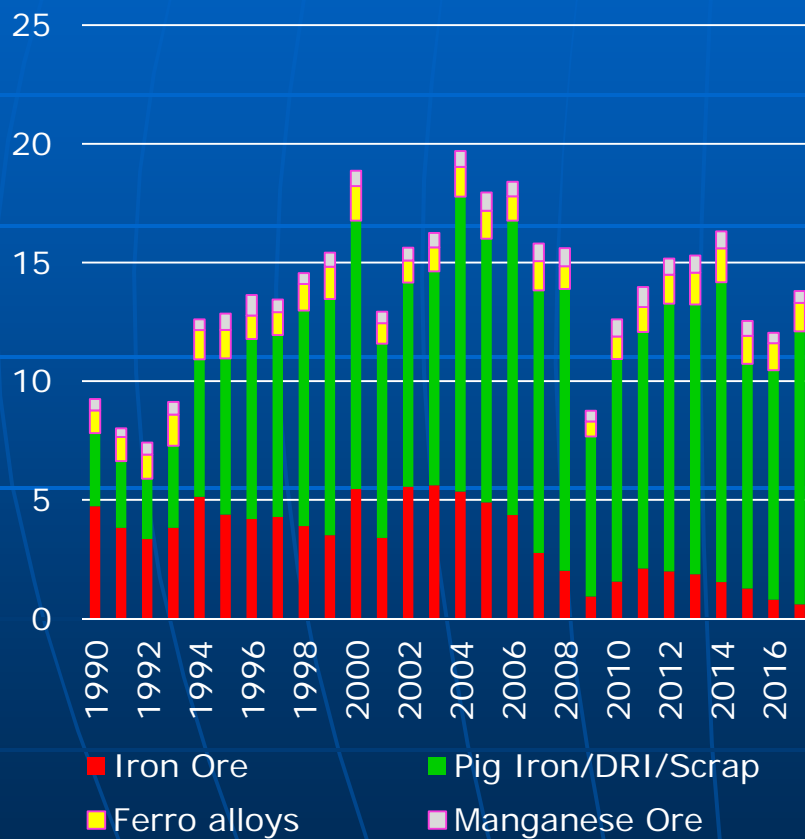
- 1st Half Flooding
 - Supply Restriction
 - Cost Increases
- S. American Harvest Losses (Spring)
- Chinese Tariffs on Soybeans, DDGS
- U.S. Tariffs on Steel, Aluminum
- General Strength in Steel Industry
 - Higher Scrap Prices
 - Higher Finished Steel Prices
 - Higher Barge Demand
- Increase in Coal Exports

Covered Hopper Supply and Demand

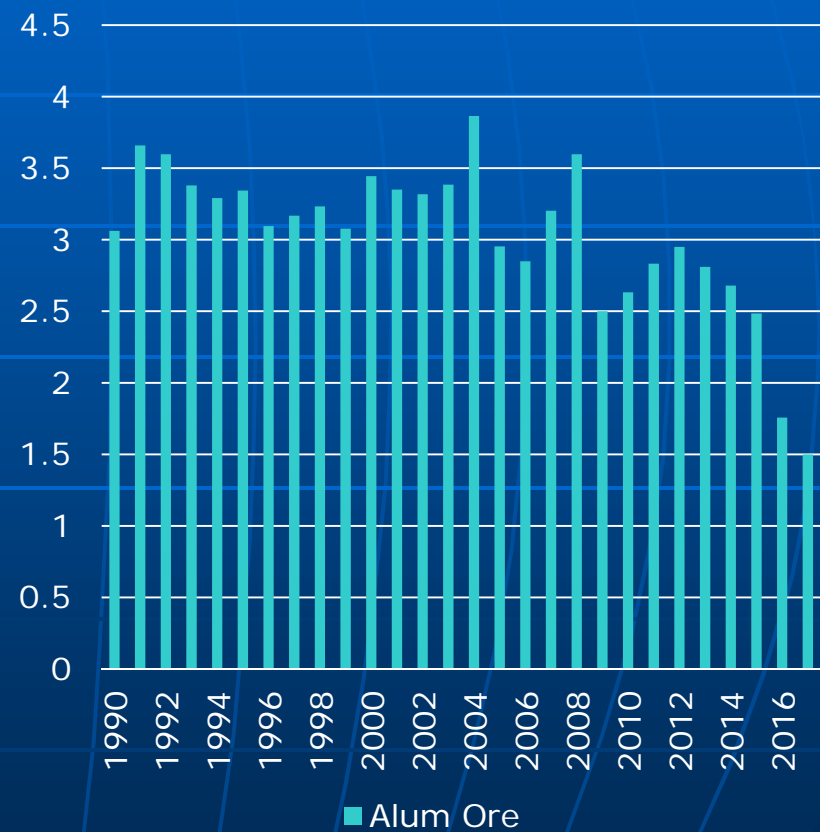


Steel and Aluminum Sectors

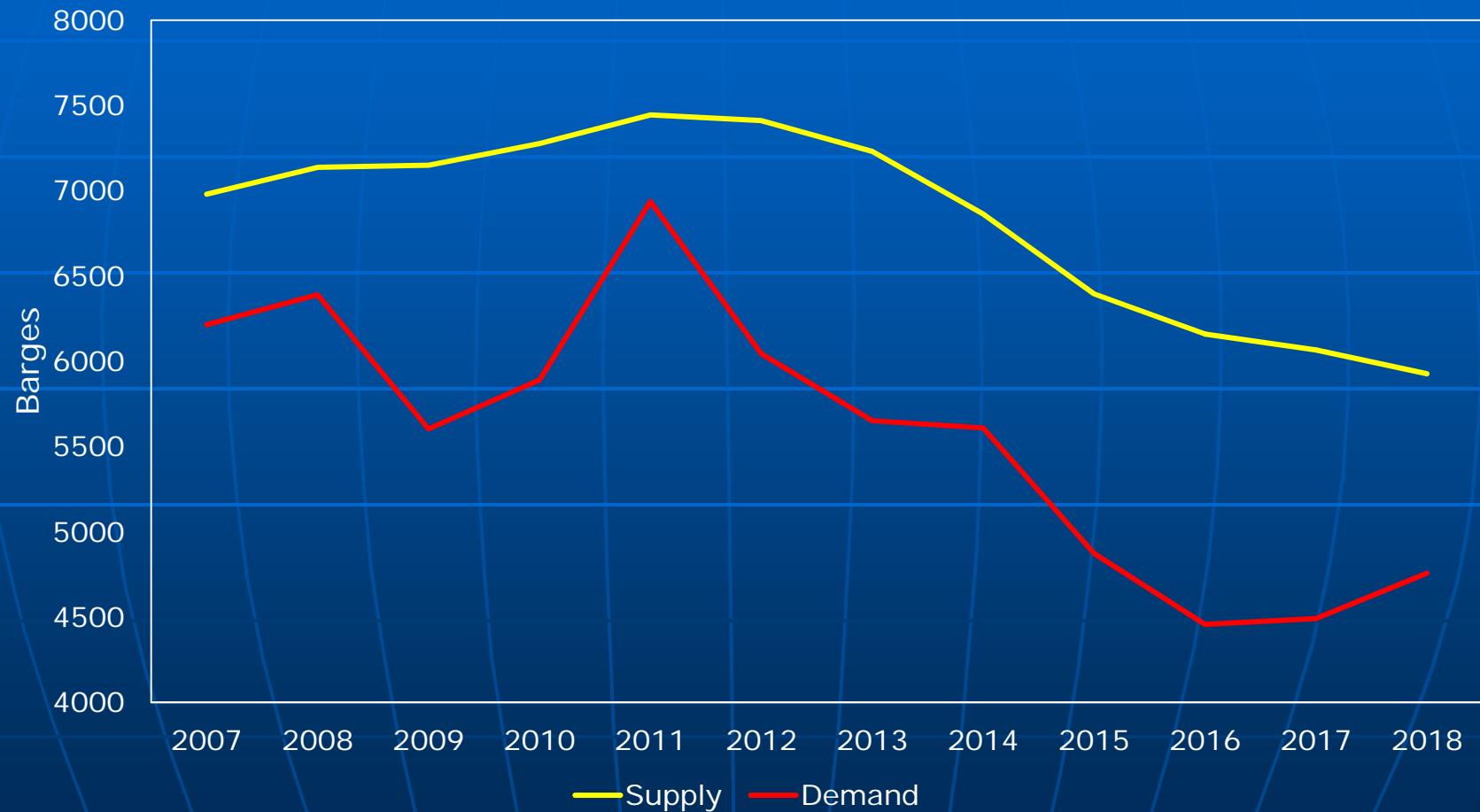
Steel Sector



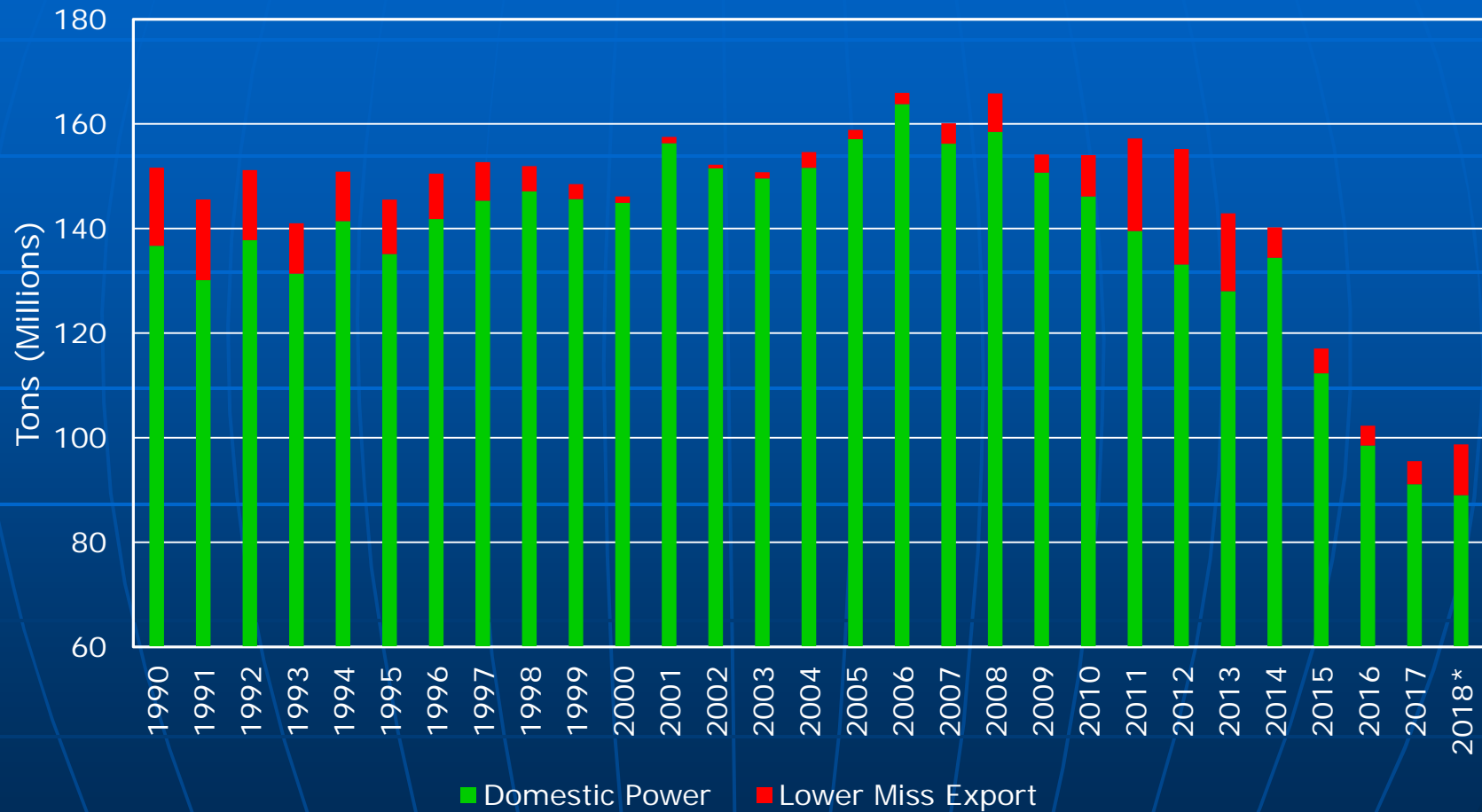
Aluminum Ore



Open Hopper Supply/Demand



Barged Shipments of Coal



Lower Mississippi Coal Exports By Mode

